

BLZF1 Antibody (Center)
Affinity Purified Rabbit Polyclonal Antibody (Pab)
Catalog # AP9600C**Specification**

BLZF1 Antibody (Center) - Product Information

Application	WB, IF, E
Primary Accession	Q9H2G9
Reactivity	Human
Host	Rabbit
Clonality	Polyclonal
Isotype	Rabbit IgG
Calculated MW	44910
Antigen Region	156-184

BLZF1 Antibody (Center) - Additional Information**Gene ID** 8548**Other Names**

Golgin-45, Basic leucine zipper nuclear factor 1, JEM-1, p45 basic leucine-zipper nuclear factor, BLZF1, JEM1

Target/Specificity

This BLZF1 antibody is generated from rabbits immunized with a KLH conjugated synthetic peptide between 156-184 amino acids from the Central region of human BLZF1.

Dilution

WB~~1:1000

IF~~1:10~50

E~~Use at an assay dependent concentration.

Format

Purified polyclonal antibody supplied in PBS with 0.09% (W/V) sodium azide. This antibody is purified through a protein A column, followed by peptide affinity purification.

Storage

Maintain refrigerated at 2-8°C for up to 2 weeks. For long term storage store at -20°C in small aliquots to prevent freeze-thaw cycles.

Precautions

BLZF1 Antibody (Center) is for research use only and not for use in diagnostic or therapeutic procedures.

BLZF1 Antibody (Center) - Protein Information**Name** BLZF1

Synonyms JEM1

Function Required for normal Golgi structure and for protein transport from the endoplasmic reticulum (ER) through the Golgi apparatus to the cell surface.

Cellular Location

Golgi apparatus membrane [Isoform 2]: Cytoplasm. Note=Not detected in the nucleus

Tissue Location

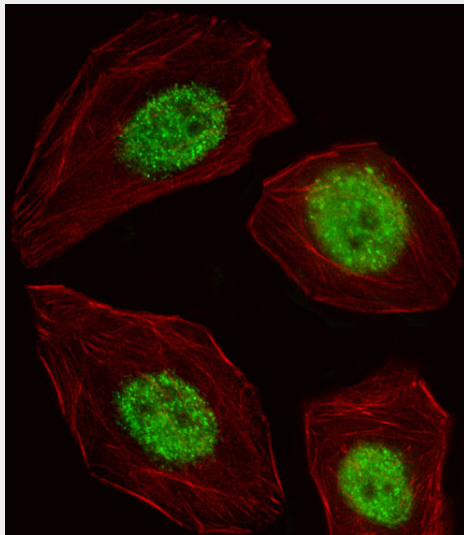
Detected in adrenal gland (PubMed:9129147).

BLZF1 Antibody (Center) - Protocols

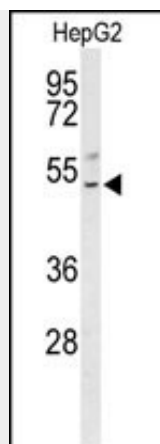
Provided below are standard protocols that you may find useful for product applications.

- [Western Blot](#)
- [Blocking Peptides](#)
- [Dot Blot](#)
- [Immunohistochemistry](#)
- [Immunofluorescence](#)
- [Immunoprecipitation](#)
- [Flow Cytometry](#)
- [Cell Culture](#)

BLZF1 Antibody (Center) - Images



Fluorescent image of A549 cell stained with BLZF1 Antibody (Center)(Cat#AP9600c).A549 cells were fixed with 4% PFA (20 min), permeabilized with Triton X-100 (0.1%, 10 min), then incubated with BLZF1 primary antibody (1:25, 1 h at 37°C). For secondary antibody, Alexa Fluor® 488 conjugated donkey anti-rabbit antibody (green) was used (1:400, 50 min at 37°C).Cytoplasmic actin was counterstained with Alexa Fluor® 555 (red) conjugated Phalloidin (7units/ml, 1 h at 37°C).BLZF1 immunoreactivity is localized to Nucleus significantly.



Western blot analysis of BLZF1 Antibody (Center) (Cat. #AP9600c) in HepG2 cell line lysates (35ug/lane). BLZF1 (arrow) was detected using the purified Pab.

BLZF1 Antibody (Center) - Background

Required for normal Golgi structure and for protein transport from the endoplasmic reticulum (ER) through the Golgi apparatus to the cell surface.

BLZF1 Antibody (Center) - References

Ehret, G.B., et al. Eur. J. Hum. Genet. 17(12):1650-1657(2009)
Cheung, C.L., et al. Hum. Mol. Genet. 18(4):679-687(2009)
Reichman, T.W., et al. Mol. Cell. Biol. 22(1):343-356(2002)